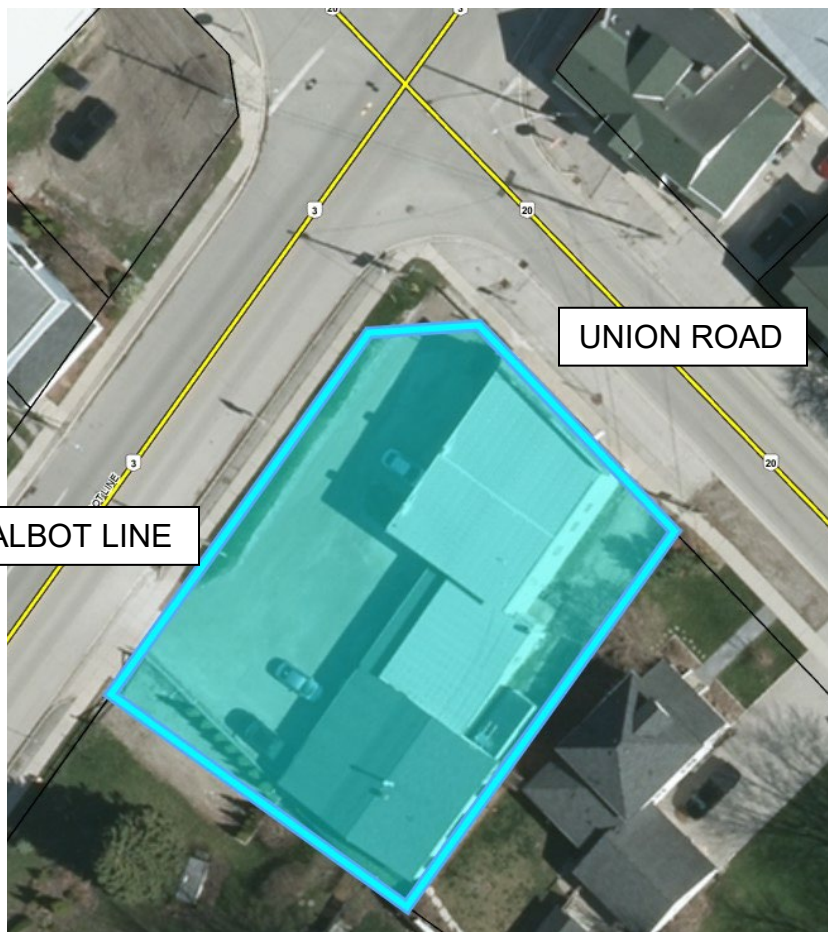


NOTICE OF SURPLUS LAND

Council has passed a resolution declaring the following property surplus to the needs of the Township:

35809 Talbot Line, legally described as CON SNBTR PT LOT 15 and PLAN; 152 N PT LOT 3 RP 11R8789; PART 1 – Known as the “Shedden Commercial Plaza”.

The subject lands have been declared surplus to the needs of the municipality as a result of the vacancy of a majority of tenants and because the installation of sanitary services is imminent. Servicing will enable the repurposing of the lands for commercial uses, increased land values, and possible residential units above or behind a storefront building. Southwold Council will consider a Request for Proposal (RFP) to dispose of the subject lands.



More information pertaining to the RFP is available at the Township Office, 35663 Fingal Line, Fingal, ON, Clerk's department, Monday to Friday from 8:30 a.m.- 4:30 p.m. or at the following link:

southwold.ca/bidsandtenders

Thank you,

Lisa Higgs,
CAO/Clerk
cao@southwold.ca