

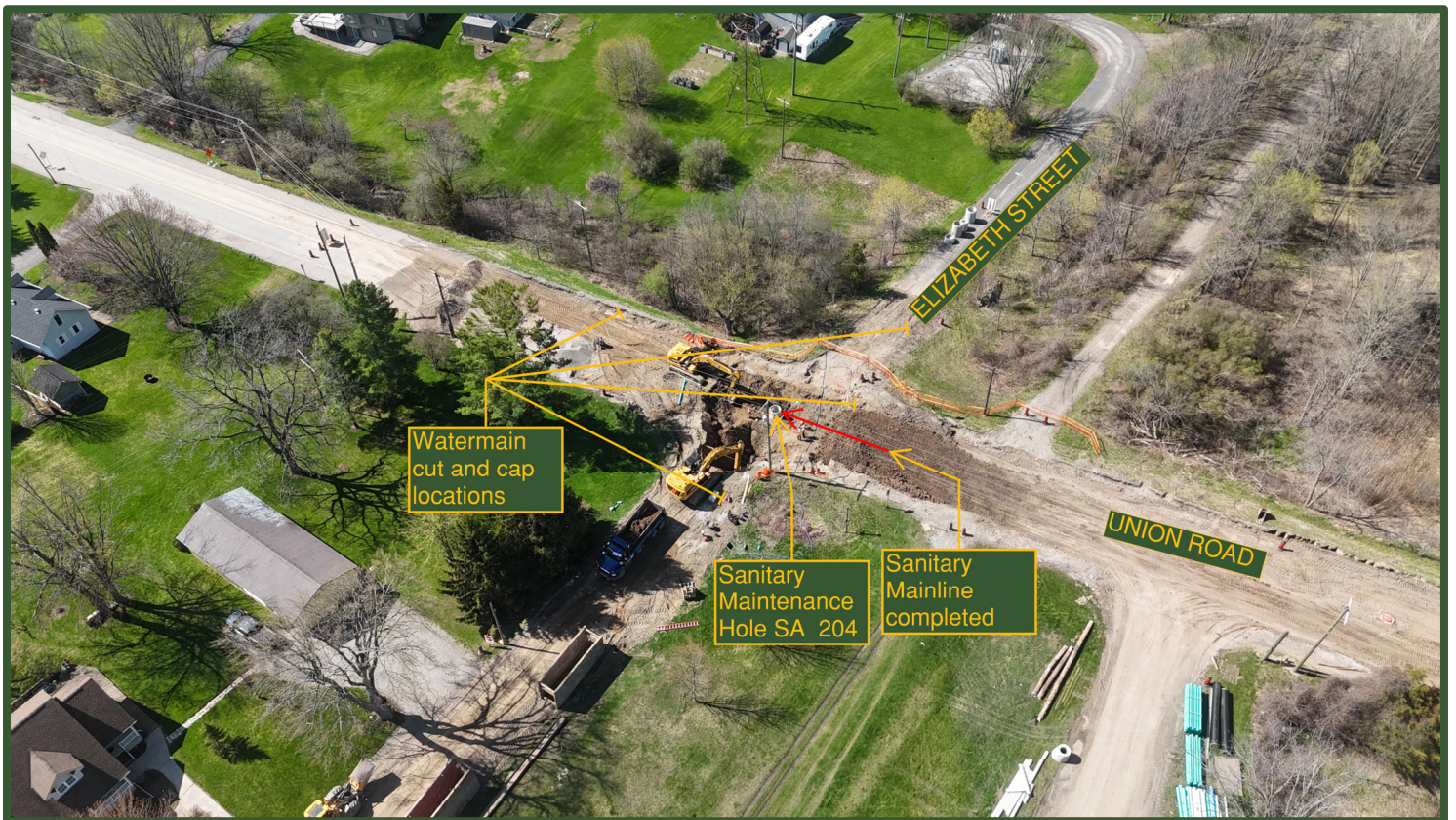
April 24, 2026

Shedden Construction Update #8

Work Completed this week (Apr 20 – Apr 24):

Crew

- Completed installation of the sanitary mainline from the north limit and installed sanitary maintenance hole SA 204.
- Cut, capped, and removed the watermain at the intersection of Union Road and Elizabeth Street.
- Began installing the sanitary mainline from SA 204 at Union Road and Elizabeth Street, proceeding east along Elizabeth Street.
- Replaced a water valve on Orchard Street.



Work Planned for (Apr 27- May 1):

Crew

- Continued installation of the sanitary mainline from SA 204 at Union Road and Elizabeth Street, proceeding east along Elizabeth Street toward SA 211.
- Install sanitary PDs on the south side of Elizabeth Street, stubbed to the property line.
- Began installing the sanitary mainline from SA 204 at Union Road and Elizabeth Street, proceeding west along Elizabeth Street toward SA 213, and installed sanitary maintenance hole SA 213.
- Installed the watermain at the intersection of Union Road and Elizabeth Street.





Road Closure and Access:

- Union Road is closed to through traffic between Fifth Line and Talbot Line. Detour signage has been installed in accordance with the approved detour plan.
- The detour route is west of Union Road via Iona Road.
- Local traffic will continue to have access to properties within the closure limits.
- The school bus company has communicated any pick-up and drop-off adjustments directly with affected users.

Construction Safety:

- Your safety is very important to us. Please respect the construction work zone and all posted signage.
- Use caution when travelling through or near the construction area and follow directions from traffic control personnel.
- Be aware that construction equipment and trucks may be entering and exiting the work zone.
- Parents are asked to ensure children stay clear of the construction area and equipment. Children should not enter the work zone and should be accompanied by a parent or guardian when near the construction area.