

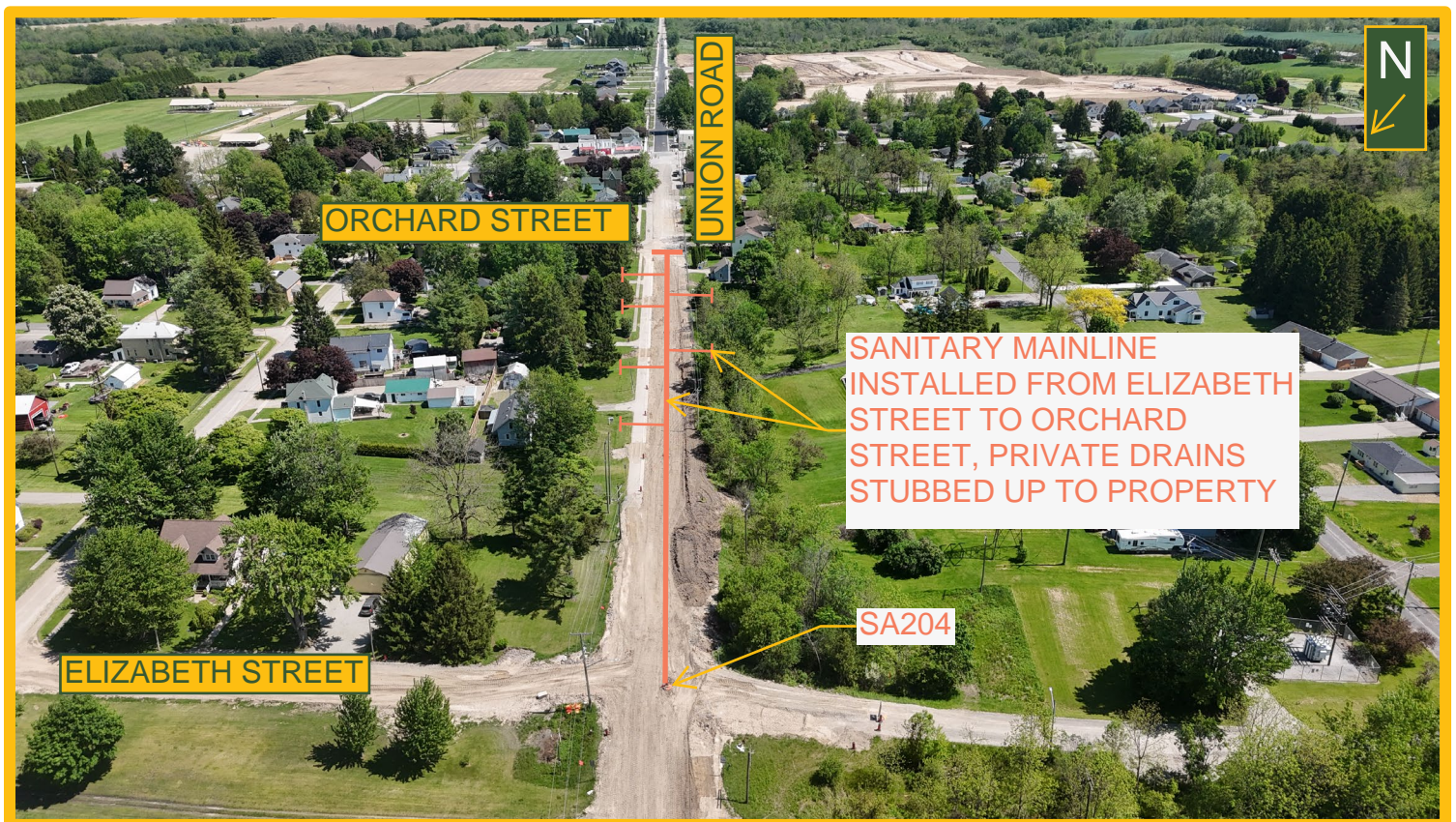
May 29th, 2026

Shedden Construction Update #13

Work Completed this week (May 25 – May 29):

Crew

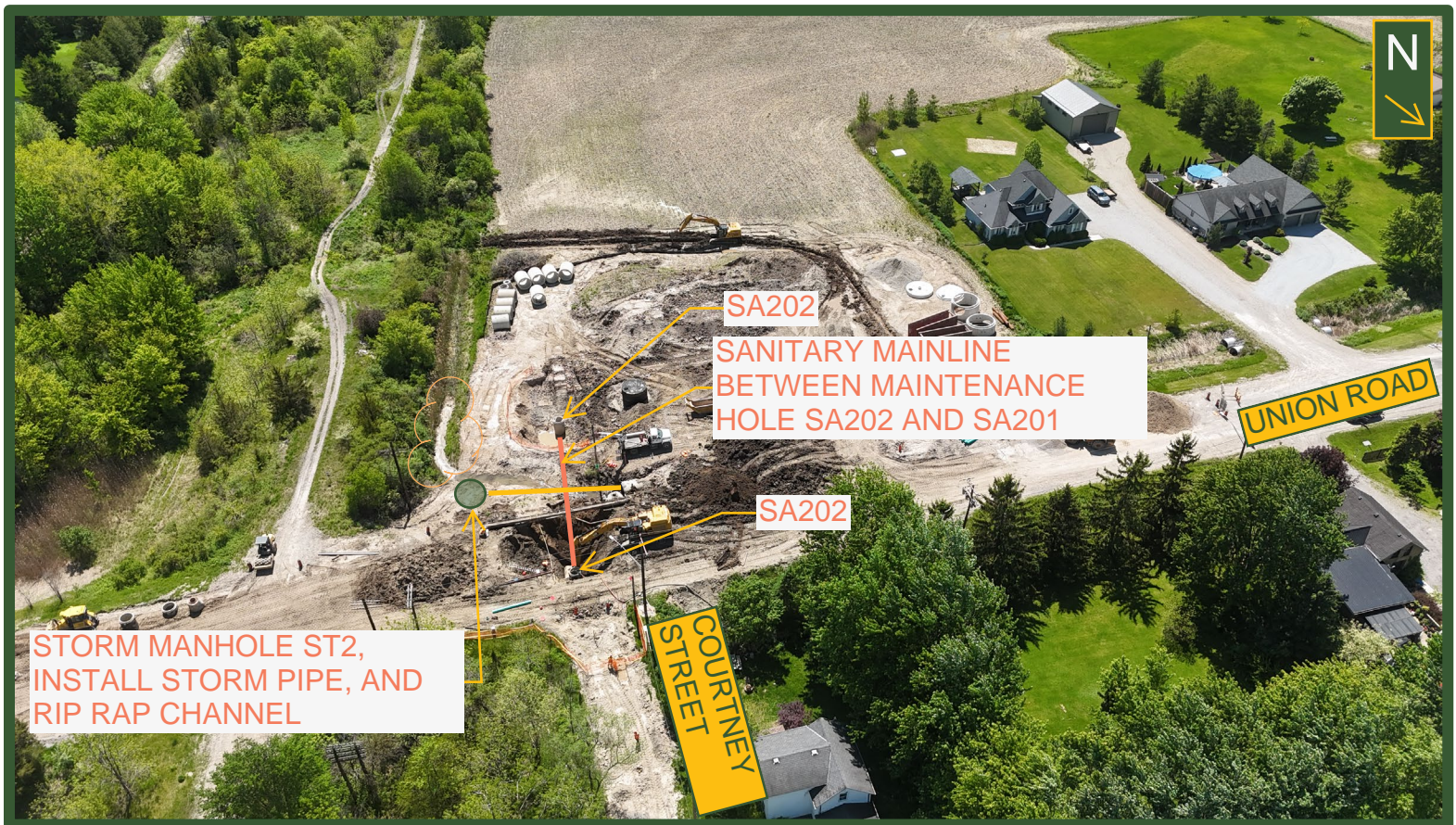
- Completed installation of the sanitary mainline on Union Road south of sanitary maintenance hole SA204 up to Orchard Street.
- Sanitary private drain stubs were installed up to property line in between SA204 and Orchard Street.
- Moved to Union Road and Courtney to install the sanitary mainline between maintenance holes SA201 and SA202.



Work Planned for (June 1 – June 5):

Crew

- Install sanitary mainline from maintenance hole SA202 to SA201
- Complete the storm work on the west side of Union Road near the Courtney intersection. Install storm maintenance hole ST2 and channel rip rap to ravine.





Road Closure and Access:

- Union Road is closed to through traffic between Fifth Line and Talbot Line. Detour signage has been installed in accordance with the approved detour plan.
 - The detour route is west of Union Road via Iona Road.
 - Local traffic will continue to have access to properties within the closure limits.
 - The school bus company has communicated any pick-up and drop-off adjustments directly with affected users.
 - Please place your garbage and recycling bins the day before your scheduled pick up or by 7:00a.m at the end of your driveway and clearly label them with your address. The contractor will collect all bins within the construction zone and return them to your property by the end of the day after collection.
-

Construction Safety:

- Your safety is very important to us. Please respect the construction work zone and all posted signage.
- Use caution when travelling through or near the construction area and follow directions from traffic control personnel.
- Be aware that construction equipment and trucks may be entering and exiting the work zone.
- Parents are asked to ensure children stay clear of the construction area and equipment. Children should not enter the work zone and should be accompanied by a parent or guardian when near the construction area.