

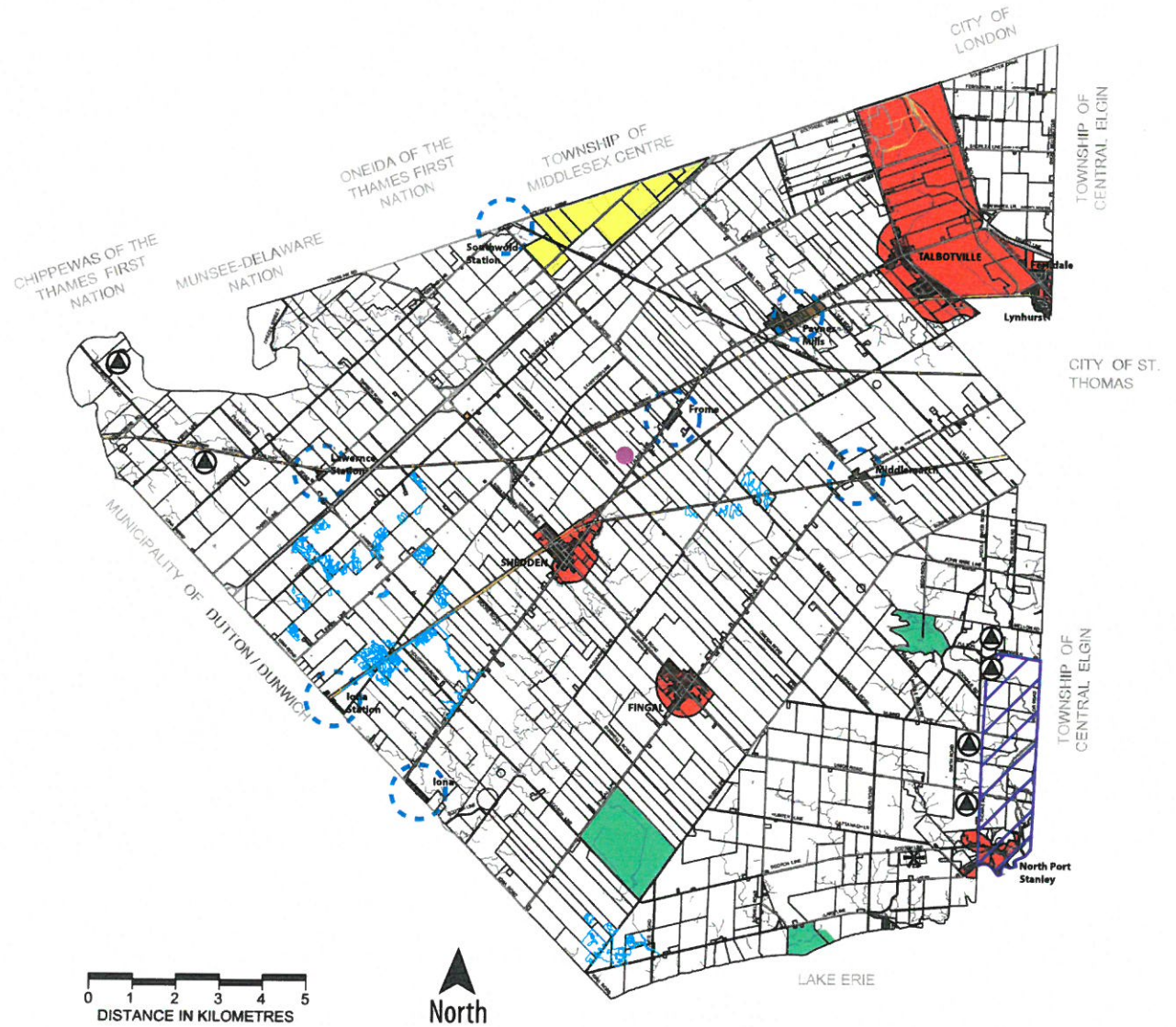


# TOWNSHIP OF SOUTHWOLD

Official Plan  
Schedule 'A'  
Land Use

July 26, 2013

-  AGRICULTURAL
-  SETTLEMENT AREA
-  HAMLET
-  HIGHWAY SERVICE COMMERCIAL CENTRE
-  WASTE MANAGEMENT
-  OPEN SPACE
-  OPERATIONAL SEWAGE TREATMENT SITE
-  CLOSED WASTE DISPOSAL SITE
-  PETROLEUM POOL
-  PROVINCIALY SIGNIFICANT WETLANDS
-  ANSI BOUNDARY






# TOWNSHIP OF SOUTHWOLD

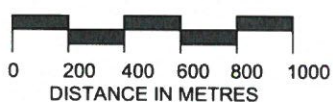
Official Plan

Schedule 'A-1'

Talbotville Settlement Area

July 26, 2013

-  SETTLEMENT AREA BOUNDARY
-  RESIDENTIAL
-  GENERAL COMMERCIAL
-  INDUSTRIAL
-  OPEN SPACE
-  HAZARD LANDS (overlay)
-  WOODLANDS (overlay)







# TOWNSHIP OF SOUTHWOLD

Official Plan

Schedule 'A-3'

Shedden Settlement Area

July 26, 2013

— SETTLEMENT AREA BOUNDARY

RESIDENTIAL

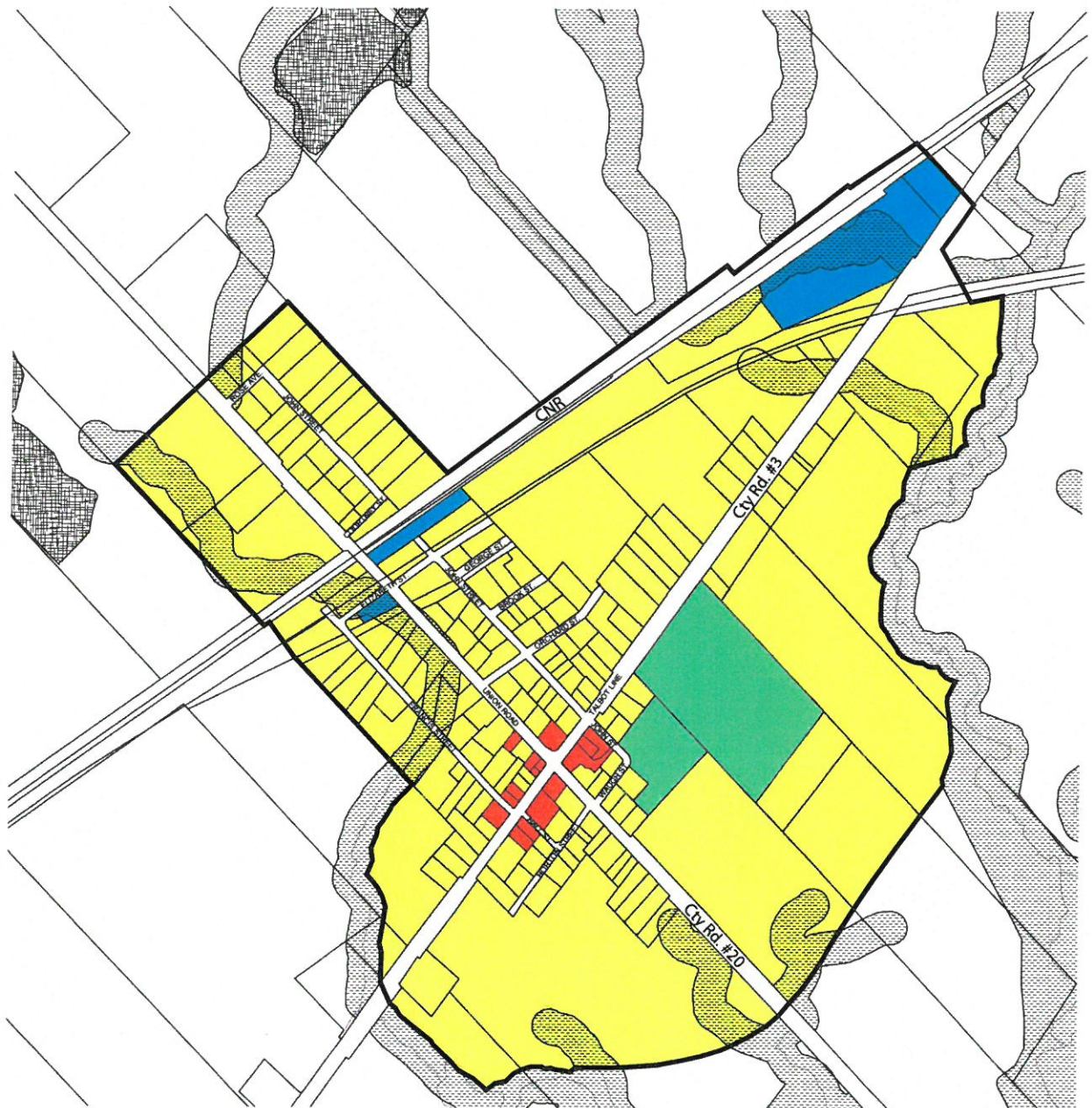
GENERAL COMMERCIAL

INDUSTRIAL

OPEN SPACE

HAZARD LANDS (overlay)

WOODLANDS (overlay)



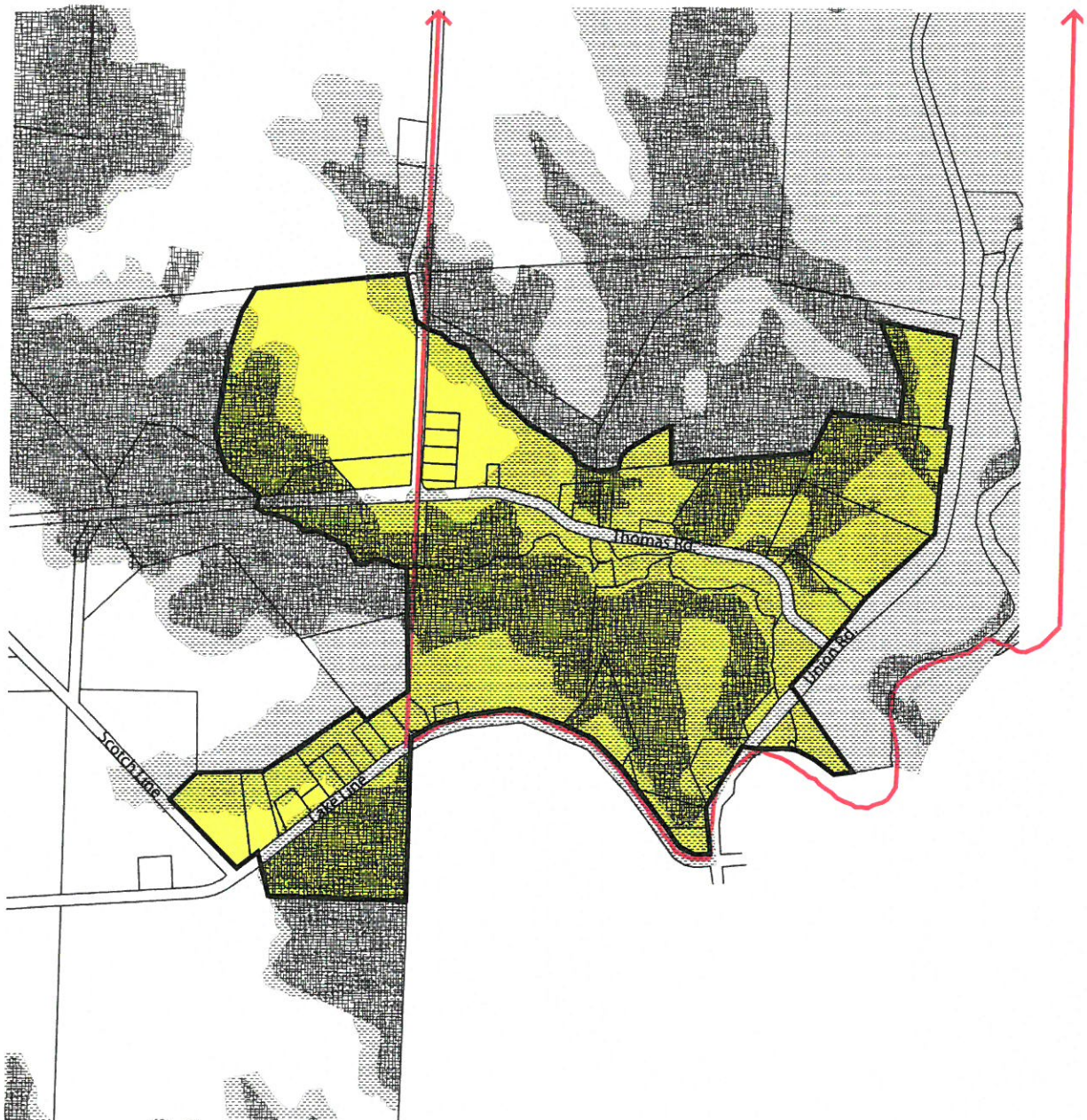


# TOWNSHIP OF SOUTHWOLD

Official Plan  
Schedule 'A-4'  
North Port Stanley

July 26, 2013

- SETTLEMENT AREA BOUNDARY
- ANSI BOUNDARY
- RESIDENTIAL
- HAZARD LANDS (overlay)
- WOODLANDS (overlay)









# TOWNSHIP OF SOUTHWOLD

Official Plan

Schedule 'B'

Significant Natural Features

July 26, 2013

-  Woodlands (4 Hectares +)
-  Woodlands (less than 4 Hectares)
-  Provincially Significant Wetlands
-  ANSI Boundary



# TOWNSHIP OF SOUTHWOLD

Official Plan  
Schedule 'B-1'  
Hazard Lands

July 26, 2013

 Hazard Lands














# TOWNSHIP OF SOUTHWOLD

Official Plan  
Schedule 'C'  
Transportation

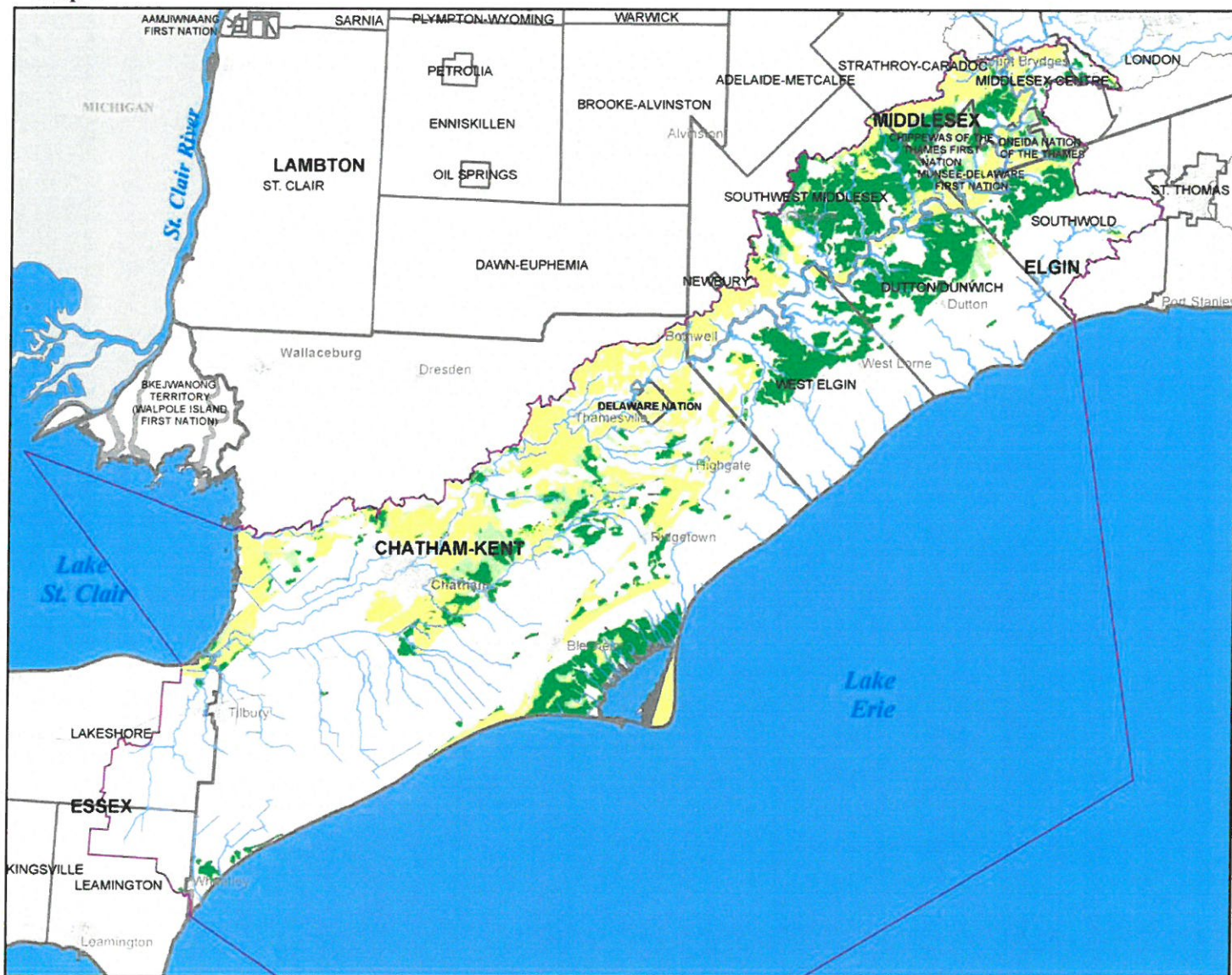
July 26, 2013

-  PROVINCIAL HIGHWAY
-  MTO RIGHT OF WAY
-  MAJOR ARTERIAL (COUNTY ROAD)
-  MINOR ARTERIAL (COUNTY ROAD)
-  COLLECTOR (COUNTY ROAD)
-  LOCAL (COUNTY ROAD)
-  SUBURBAN LINK (COUNTY ROAD)
-  LOCAL ROAD
-  RAILWAYS





Map 1



**Map 4-9  
Significant Groundwater  
Recharge Areas (SGRA)  
Vulnerability**

**Lower Thames Valley  
Source Protection Area  
Assessment Report**

**Legend**

- Source Protection Area Boundary
- Municipal Boundaries
- County Boundaries

**SGRA Vulnerability**

- 2
- 4
- 6

10 5 0 10 km

Map created by UTRCA, December 2, 2009

Base mapping produced under license with the Ontario Ministry of Natural Resources © 2009.

Source Protection Area Boundary provided by Ontario Ministry of the Environment, 2006

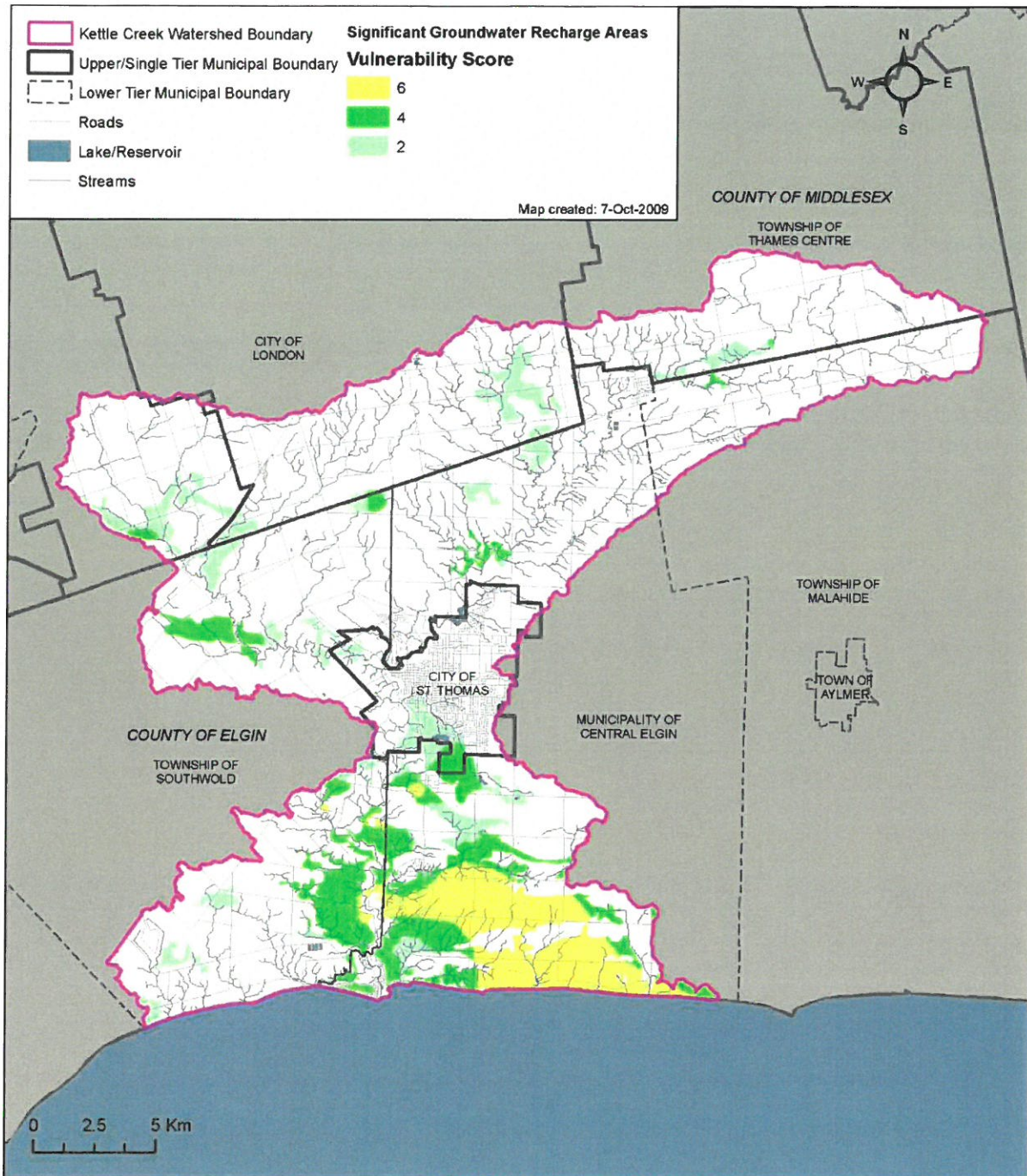
SGRA Vulnerability: Thames-Sydenham & Region Tier 1 Water Budget, Ver 0.3.10, Jan 2010 and vulnerability assessment completed in Highly Vulnerable Aquifer Identification (Version 2.1, Draft for Peer Review November 2009), UTRCA.

DRINKING WATER  
SOURCE PROTECTION  
LET'S PROTECT WATER

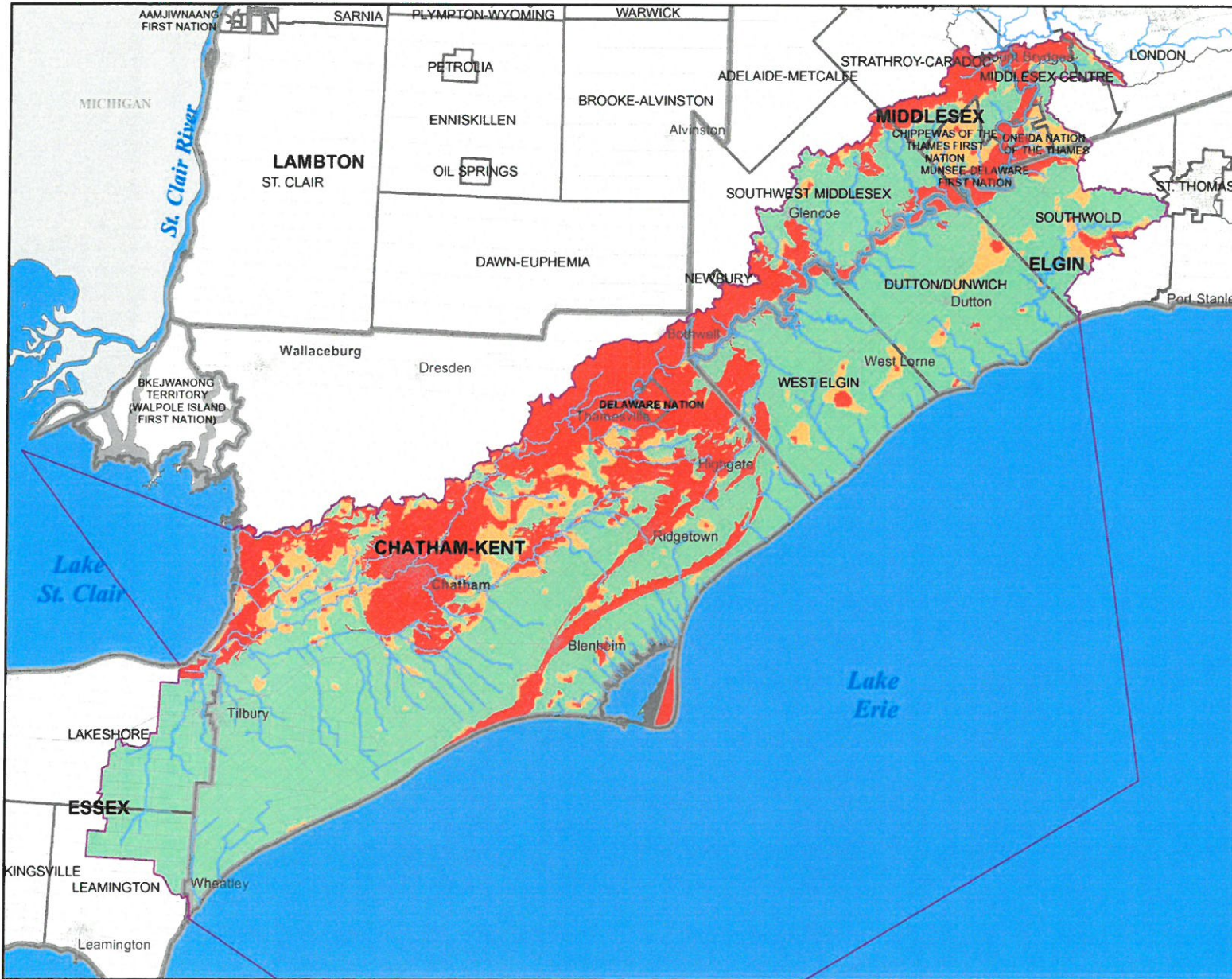
Thames-Sydenham  
and Region



Map 4-6: Significant Groundwater Recharge Areas with Vulnerability Scoring







## Map 4-7a Aquifer Vulnerability

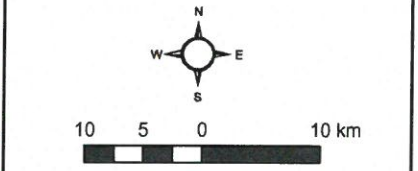
### Lower Thames Valley Source Protection Area Assessment Report

**Legend**

- Source Protection Area Boundary
- County Boundaries

**Aquifer Vulnerability**

- High
- Moderate
- Low



Map created by UTRCA, December 2, 2009.

Base mapping produced under license with the Ontario Ministry of Natural Resources. © 2009.

Source Protection Area Boundary provided by Ontario Ministry of the Environment, 2006.

Aquifer Vulnerability- Highly Vulnerable Aquifer Identification, (Version 2.1, Draft for Peer Review November 2009), UTRCA.

**DRINKING WATER SOURCE PROTECTION**  
ACT FOR CLEAN WATER

Thames-Sydenham and Region



Map 4-1: Aquifer Vulnerability

